

DQCI Services

Trusted Dairy Laboratory Services

for more than 50 Years

Ready To Use Culture Media Plates For Mastitis Testing



Example : DQCI's SSGN & SSGNC Plates

Section 1 .. Non-selective blood agar capable of growing most bacteria. It is used as a growth control.

Section 2 .. Is specific for Gram Negatives such as coliforms, E. coli, and Klebsiella. The SSGNC plate grows E-coli blue colonies

Section 3 .. Is specific for Streptococci.

Section 4 .. Is specific for Staphylococci.

(C) represents a chromogenic gram negative plate option available where E. coli grow out blue/purple in Section 2



Division of
**Diversified
Laboratory
Testing LLC**

5205 Quincy Street
Mounds View, MN 55112

Phone: 763-785-0484 Fax: 763-785-0584

info@dqci.com Website: www.dqci.com

e-mail:

Ready To Use Lab or On Farm

Culture Media Plates

- ***Know Sooner***
- ***Treat Sooner***
- ***Maintain Consistent Herd***

Health Improvement

The DQCI dairy mastitis quad plates for Staph, Strep and Gram Negatives (SSGN and SSGNC) are screening methods that aid the health providers and dairy producers in identifying the prevalence of these bacteria.

Follow up therapy or sanitation strategies should be implemented in consultation with your veterinarian, herdsman and dairy co-op field man.

Proper use of the DQCI mastitis quad plates can aid the dairy producer in taking corrective action sooner.

MATERIALS REQUIRED

1. Media plates containing the selective bacterial growth media
2. 10 microliter inoculating loops
3. Alcohol wipes
4. Sterile collection vials
5. Regular bleach solution
6. Zip-lock freezer bags
7. A small incubator set at 35° C. (95° F.)

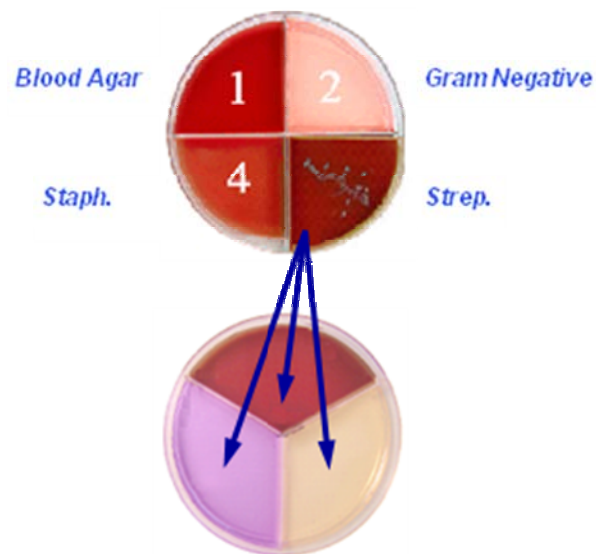
8. Training: DQCI SSGN MASTITIS CULTURE QUAD

PLATE USERS MANUAL

(Available on-line at www.dqci.com and click Media Training)

Identifying Streps With The Strep ID Tri-plate

A) Inoculate and incubate the SSGN(C) Quad Plate



B) Inoculate the Strep ID Tri-Plate with growth from the quad plate Strep. section and incubate



Read the Strep ID Tri-plate for

- Enterococcus faecalis
- Strep. bovis (equinus)
- Strep. agalactia
- Strep. dysgalactiae
- Strep. uberis

Ready To Use
On Farm Culture Media Plates
For Mastitis Testing

(Each media plate Item sold in 10 plates per sleeve multiples)

Item ID	Item Description
222200	<p>Mastitis SSGN Quad Plate -Staph, Strep, Gram Negative all in one.</p> <p>Section 1 Non-selective blood agar capable of growing most bacteria. It is used as a growth control.</p> <p>Section 2 Is specific for Gram negatives such as coliforms, E. coli, and Klebsiella.</p> <p>Section 3 Is specific for Streptococcus.</p> <p>Section 4 Is specific for Staphylococcus.</p>
222210	<p>Mastitis SSGNC Quad Plate -Staph, Strep, Gram Negative all in one. Same as item 222200 except that E. coli colonies on the SSGNC plate will be blue or purple while E. coli colonies on the SSGN plate will be pink with a pink precipitate surrounding the colony. An exception on the SSGNC plate is E. coli O157:H7 which does not turn blue or purple, but will give the typical pink precipitate surrounding a pink colony.</p>
223000	<p>Strep ID Tri Plate - For differentiation and presumptive identification of streptococci species (Enterococcus faecalis, Streptococcus bovis, Streptococcus agalactia, Streptococcus dysgalactia, Streptococcus uberis).</p>
222900	<p>Mycoplasma Plate - For cultivation and selective isolation of mycoplasma</p>
222100	<p>Strep/Staph Bi Plate II - <u>Staphylococcus</u> media for isolation of Staph organisms including Staph aureus. <u>Streptococcus</u> media for isolation of Strep organisms including Strep agalactia.</p>
222000	<p>General Bi Plate I - Non selective Blood Agar for Total Count and Hemolytic Reactions / selective gram negative agar.</p>
222400	<p>Sensitivity Agar Plate - Agar media for sensitivity testing using the Kirby Bauer method.</p>
222500	<p>Sensitivity (fastidious) Agar Plate with blood - Agar media with 5% blood added for growth of the more fastidious bacteria.</p>
222600	<p>MacConkey Agar Plate: For isolation and differentiation of gram negative bacilli.</p>
222700	<p>Strep Media Plate (TKT-FC): meets National Mastitis Council recommendations</p>
222800	<p>Staph Media Plate (KLMB): meets National Mastitis Council recommendations</p>
222810	<p>Staph Agar Quad Plate (KLMB): Cultures 4 samples at a time (1 udder by quadrant or 4 cows), meets National Mastitis Council recommendations.</p>
222300	<p>Blood Agar Plate: Tryptic soy agar with 5% sheep blood.</p>



DQCI
Services

Division of
**Diversified
Laboratory
Testing LLC**

5205 Quincy Street
Mounds View, MN 55112
Phone: 763-785-0484 Fax: 763-785-0584
e-mail: info@dqci.com Website: www.dqci.com